



PREVENTION
Pages 2 to 4



ENDODONTICS
Pages 5 to 14



RESTORATIVES
Pages 15 to 43



SELECTED PRODUCTS CATALOGUE 2024

Kerr[™]

CaviWipes™ & CaviCide™

Liquid and Wipe Surface Disinfectants

CaviWipes™ and CaviCide™ are broad-spectrum medical device surface disinfectant, with clinically relevant efficacy claims: bactericidal, virucidal, fungicidal, tuberculocidal and yeasticidal.

These ready to use multipurpose intermediate level disinfectants are made for use on hard, non-porous surfaces of non-invasive medical devices within dental practices, including patient care areas and laboratories.

CaviWipes and CaviCide kill organisms that pose a threat in today's environment and can help reduce the risk of cross contamination on treated non-invasive medical device surfaces and doing so may help alleviate your important disinfection concerns.

Fast, easy and multi-surface compatible

Kill Most Pathogens in 3 minutes or Less² – Faster change over time and helps lower risks of cross contamination.

Ready-To-Use Products – No dilution or mixing required.

Saves Time & Inventory – A cleaner and disinfectant in one.

Low Alcohol Content – Less than 20%, which offers excellent material compatibility.

Safe – Fragrance and colorants-free. Do not contains phenol, aldehyde, bleach or other toxic chemicals



Spectrum and kill times

Organism	Kill time	Organism	Kill time
Mycobacterium tuberculosis var: bovis (BCG) ³	3 minutes	SARS-associated Human Coronavirus (SARS-COV-1) ⁵	3 minutes
Methicillin Resistant Staphylococcus aureus (MRSA) ⁹	3 minutes	SARS-associated Human Coronavirus 2 (SARS-COV-2) (COVID-19 Virus) ¹⁰	2 minutes
Pseudomonas aeruginosa ⁴	1 minute	Human Coronavirus ⁵	2 minutes
Salmonella enterica ⁹	3 minutes	Hepatitis B virus (HBV) ⁵	2 minutes
Staphylococcus aureus ⁴	1 minute	Hepatitis C virus (HCV) ⁵	2 minutes
Vancomycin Resistant Enterococcus faecalis (VRE) ⁹	2 minutes	Human Immunodeficiency Virus (HIV-1) ⁵	2 minutes
Staphylococcus aureus with reduced susceptibility to vancomycin ⁹	2 minutes	Herpes Simplex Virus Types 1 and 2 ⁵	2 minutes
Enterococcus hirae ⁴	1 minute	Influenza A2 Virus ⁵	2 minutes
Escherichia coli ⁴	1 minute	Modified Vaccinia Virus Ankara (MVA) ⁶	5 minutes
Proteus mirabilis ⁴	1 minute	Candida albicans ⁷	1 minute ⁸
		Trichophyton mentagrophytes ⁹	3 minutes

The CaviWipes and CaviCide family provides time savings, convenient packaging, ease of use, and intermediate-level disinfection in various sizes and in multiple configurations for your office needs. Available in spray, liquid and wipe formats, these products are ideal for cleaning and disinfecting medical devices surfaces.

CaviCide can be used as a disinfectant spray or as a disinfectant immersion solution for non-invasive medical instruments. It is ready-to-use and doesn't require dilution.

CaviWipes and CaviWipes XL are disposable, ready-to-use disinfectant wipes pre-saturated with CaviCide™ solution for the effective removal of dirt and quick and broad-spectrum disinfection. Each Wipe is a durable, non-woven fully saturated towelette that won't dry out and won't bunch up during use.

CaviWipes offers excellent surface contact: available in various formats and sizes – flatpack (17.5 x 22.5 cm) and canister (15.24 x 17.15 cm), (22.9x 30.5 cm). Flat Packs minimize storage space, unclutter counter space, and are resealable. On Canister, the deep well lid and easy access tab provides quick opening and tight closures between wipes.

- EN14476 tested using MVA (Modified vaccinia virus Ankara) as a surrogate representing enveloped virus
- Please refer to organism list for appropriate application time
- AOAC 965.12
- EN 13727, EN 16615, EN 13697, EN 14561 (Clean condition)
- ASTM E1053-11
- EN 14476, EN 16777 (Clean condition)

- EN 13624, EN 16615, EN 13697, EN 14562 (Clean condition)
- If used as a disinfectant spray (EN 13697), the contact time is 1 minutes. If used as an immersion disinfectant solution (EN14562), the contact time is 3 minutes. (Clean condition)
- AOAC 961.02
- ASTM E1053-20

CaviCide	REF/Part No.
CaviCide – 5 l Tank	4731223
CaviCide – Pump for 5 l Tank	4731229
CaviCide – 200 ml Bottle	4731221/15
CaviCide – 700 ml Bottle	4731222/15

CaviWipes	REF/Part No.
CaviWipes – 160 Pre-Saturated Towelettes (15.24 x 17.15 cm) Canister – Pack of 12	4731160
CaviWipes – 45 Pre-Saturated Towelettes (17.5 x 22.5 cm) Flat Packs – Pack of 20	4731245
CaviWipes XL – 65 Pre-Saturated Towelettes (22.9 x 30.5 cm) Canister – Pack of 12	4731065

Cleanic™ in Tube

One-Step cleaning and polishing paste with perlite

Cleanic™ is the proven one-Step cleaning and polishing paste with integrated cleaning variability: during the initial seconds of use, the paste exerts a high cleaning power that converts into a gentle polishing action as the Perlite particles fragment. This technology makes Cleanic a unique paste that combines high cleaning power, polishing of dental surfaces and gentleness on hard tissue. Cleanic is a paste for dental hard substances which may also be used on all denture materials. It features an RDA of 21 and is not made with gluten and lactose. Cleanic is available in five versions – Mint (with and without fluoride), Green Apple, Berry Burst and in a variant free of artificial colours and flavours. Cleanic is offered in three different types of packaging: single dose, tube and jar.



Integrated abrasion variability

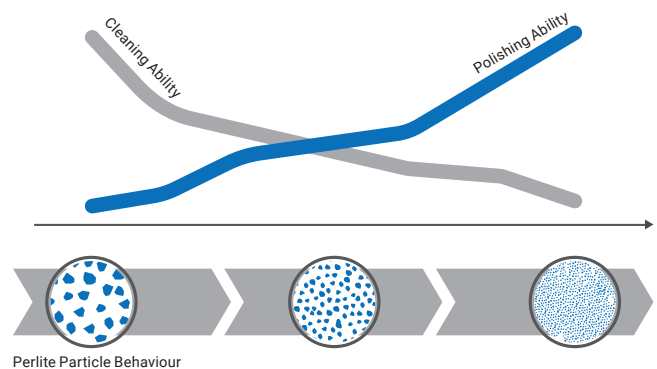
The volcanic perlite (natural silica) particles adapt their abrasiveness throughout your procedure.

Cleaning

When Cleanic is first applied to the tooth surface, it behaves like a coarse paste. This is when Cleanic’s cleaning ability is in full force.

Polishing

Under load and within seconds, the abrasive particles are fractionated and their cutting edges become rounded and less blunt. At this point, the paste becomes effective for high-gloss polishing.



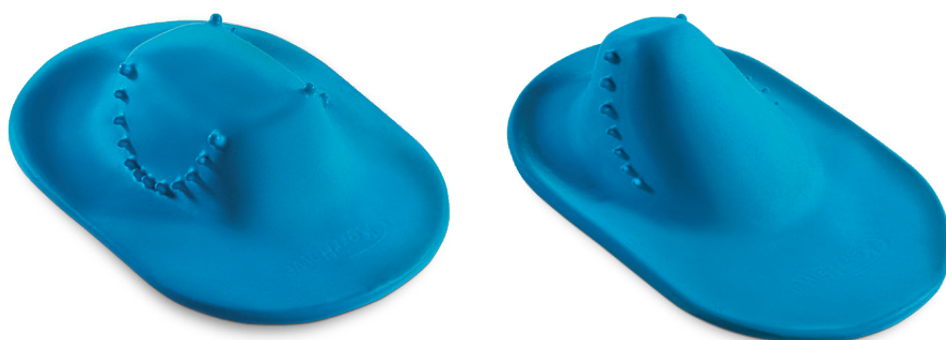
Cleanic™ in Tube – 100 g	REF/Part No.
Cleanic in Tube – Mint – With fluoride	3380
Cleanic in Tube – Green Apple – With fluoride – Without menthol	3382
Cleanic in Tube – Berry Burst – With fluoride	3386
Cleanic in Tube – Light – With fluoride – Without artificial colourants and flavouring	3384
Cleanic in Tube – Mint – Without fluoride	3183

OptiDam™

3D rubber dental dam

OptiDam™ is the first rubber dam with a 3-dimensional shape and nipple design, for practical and easy application. The dental dam, combined with its dedicated anatomical frame, matches the contours of the mouth, giving perfect visibility and accessibility to the treatment area. It does all this while ensuring the patient is comfortable throughout the procedure.

Available in two versions – anterior and posterior, it offers optimum protection for both patient and dental staff.



OptiDam – Posterior Intro Kit

REF/Part No. 5200

10 x Posterior OptiDam 3D Rubber Dam, 1 x Anatomical Frame

OptiDam – Anterior Intro Kit

REF/Part No. 5203

10 x Anterior OptiDam 3D Rubber Dam, 1 x Anatomical Frame

Cleanic™ in Tube – 100 g

REF/Part No.

OptiDam – Frame Refill – Pack of 2

5202

OptiDam – Posterior Refill – Pack of 30

5201

OptiDam – Anterior Refill – Pack of 30

5204

OptiDam – Posterior Refill – Pack of 60

5205

OptiDam – Anterior Refill – Pack of 60

5206

SoftClamp™

Universal rubber dam clamp

SoftClamp™ distributes the applied force evenly, reducing the pressure on the contact area. The grip-tight coating of the jaws allows SoftClamp to gently but firmly engage the tooth surface, minimising the risk of slippage and virtually eliminating the cause of patient discomfort and iatrogenic damage to the teeth.



SoftClamp™

SoftClamp™ – General Kit

REF/Part No. 5250

5 Clamps

Traverse™

Rotary Glide Path File



Peace of mind is made of Traverse

Simplified, faster procedure

Utilization of Traverse™ rotary glide path file simplifies the procedure, reduces procedure time and manual labor compare to SS hand files.

High resistance to stress and deformation

The Traverse™ files .13/.06 and .18/.06 have higher torsional resistance compared to competitors.*

More tapered glide path, reduced work load

The rotary glide path files create a more tapered glide path, thus reducing the work load on subsequent shaping files (compared with 02 taper SS files or 02 taper rotary glide path files).

* Internal comparison study just on torsional strength. Third party study with Dr. Kim (both torsional and cyclic) – Traverse study report

Higher cutting efficiency

The files possess triangular cross section, thus exhibits higher cutting efficiency compare to other files with landed cross section.

Non-cutting tip, less debris apical extrusion

The Traverse™ files are designed with non-cutting tip, minimizing transportation. In addition, the Traverse™ files are optimized under rotary motion, which incur less debris apical extrusion when compare to files designed to be used under reciprocation motion.

No risk for cross contamination

The files are offered in pre-sterilized packaging, eliminating the need to autoclave the file prior to first use.

Traverse™ – Pack of 6	REF/Part No.
.25/.08/17mm Traverse™ orifice opener row	818-8256
.13/.06/21mm Traverse™ rotary glide path file row	818-2156
.13/.06/25mm Traverse™ rotary glide path file row	818-2157
.13/.06/31mm Traverse™ rotary glide path file row	818-2158
.18/.06/21mm Traverse™ rotary glide path file row	818-2186
.18/.06/25mm Traverse™ rotary glide path file row	818-2187
.25/.08/17 mm + .18/.06/31mm / Traverse™ orifice opener + rotary glide path file	818-2198

Traverse™ – Pack of 6	REF/Part No.
.25/.08/17 mm + .13/.06/21 mm / Traverse™ orifice opener + rotary glide path file	818-2146
.25/.08/17 mm + .13/.06/25mm / Traverse™ orifice opener + rotary glide path file	818-2147
.25/.08/17 mm + .13/.06/31mm / Traverse™ orifice opener + rotary glide path file	818-2148
.25/.08/17 mm + .18/.06/21mm / Traverse™ orifice opener + rotary glide path file	818-2196
.25/.08/17 mm + .18/.06/25mm / Traverse™ orifice opener + rotary glide path file	818-2197
.25/.08/17 mm + .18/.06/31mm / Traverse™ orifice opener + rotary glide path file	818-2198



Traverse

TF Adaptive Files

NiTi twisted files

The TF Adaptive File design is based on our clinically proven Twisted File technology, which means the file is twisted to shape for improved file durability, features R-Phase™ Technology to improve file flexibility and provides exceptional debris removal.

An intuitive, colour-coded system designed for efficiency and ease of use. Just like a traffic light ... start with green and stop with red.



TF Adaptive Files

TF™ Adaptive Files	REF/Part No.
TF Adaptive File SM1 23 mm (4 pcs)	817-4203
TF Adaptive File SM1 27 mm (4 pcs)	817-4207
TF Adaptive File SM2 23 mm (4 pcs)	817-6253
TF Adaptive File SM2 27 mm (4 pcs)	817-6257
TF Adaptive File SM3 23 mm (4 pcs)	817-4353
TF Adaptive File SM3 27 mm (4 pcs)	817-4357
TF Adaptive File ML1 23 mm (4 pcs)	817-8253
TF Adaptive File ML1 27 mm (4 pcs)	817-8257
TF Adaptive File ML2 23 mm (4 pcs)	817-6353
TF Adaptive File ML2 27 mm (4 pcs)	817-6357
TF Adaptive File ML3 23 mm (4 pcs)	817-4503
TF Adaptive File ML3 27 mm (4 pcs)	817-4507

TF™ Adaptive Files	REF/Part No.
Small Procedure Pack 23 mm	817-3003
Small Procedure Pack 27 mm	817-3007
Med/Lrg Procedure Pack 23 mm	817-4003
Med/Lrg Procedure Pack 27 mm	817-4007

ZenFlex™

NiTi Rotary Shaping File

Maximum Strength. Minimally Invasive

Featuring an ideal balance of strength and flexibility, ZenFlex lets you reach the full working length with reduced risk of breakage while preserving more tooth integrity.



High Cutting Efficiency

Designed with triangular cross section with proprietary heat treatment, ZenFlex exhibits high cutting efficiency that lets you reach the full working length of even complex root geometries.



Minimally Invasive

A maximum flute diameter of 1mm and a non-cutting tip work together to minimize transportation and preserve the tooth's structural integrity.



Exceptional Strength

Resists torsional stress and cyclic fatigue resulting in minimal breakage and reduced transportation.



Excellent Flexibility

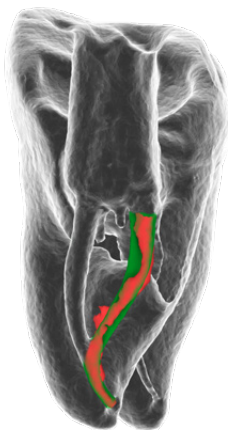
Proprietary heat-treatment design delivers excellent controlled memory and flexibility for up to 90° curves.



Follow the curvature. See the difference

We invited leading endodontist Dr. Stephen L. Buchanan to put ZenFlex to the test. Dr. Buchanan found that ZenFlex is able to shape severely curved canals.

ZenFlex is able to maintain more tooth structure after RCT, due to its 1mm maximum flute diameter.



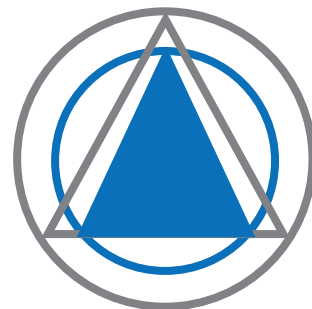
Pre-Op Canal Shaped Canal



ZenFlex

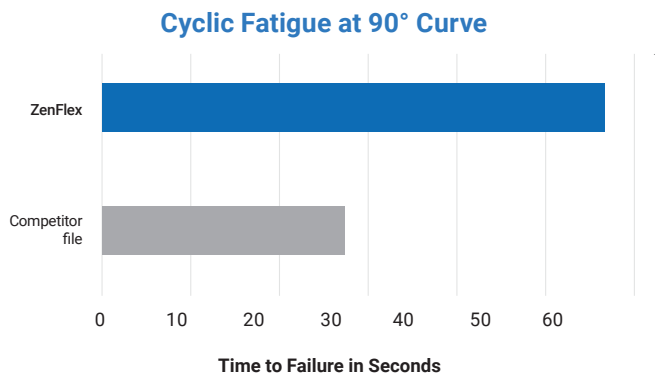


Competitor file



When failure is not an option

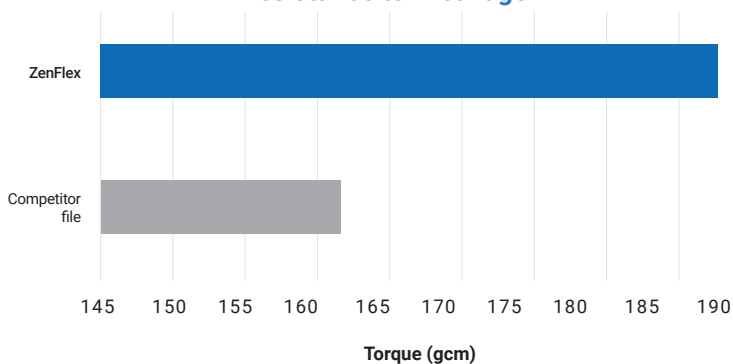
Compared to other brands, ZenFlex delivers greater resistance to cyclic fatigue. This results in longer time to failure and shorter time to reach the working length while minimizing the risk of breakage and transportation.



Torque Strength

ZenFlex is designed to be as resistant or more resistant to torsional stresses relative to major rotary file competitors despite having a 20% smaller maximum flute diameter and smaller mass.

Resistance to Breakage



Flexibility Meets Memory

Every canal anatomy is different, and some are more complex than others. Designed with proprietary heat-treatment technology, ZenFlex provides excellent flexibility for up to 90° curves.

With exceptional controlled memory, ZenFlex maintains its pre-curved shape, resulting in easier insertion into even the most challenging canal anatomies.



ZenFlex™ – Pack of 6

Taper	Tip	21 mm	25 mm	31 mm
.04	.20	818-1206	818-1207	818-1208
.04	.25	818-1256	818-1257	818-1258
.04	.30	818-1306	818-1307	818-1308
.04	.35	818-1356	818-1357	818-1358
.04	.40	818-1406	818-1407	818-1408
.04	.45	818-1456	818-1457	818-1458
.04	.50	818-1506	818-1507	818-1508
.04	.55	818-1556	818-1557	818-1558
.06	.20	818-2206	818-2207	818-2208
.06	.25	818-2256	818-2257	818-2258
.06	.30	818-2306	818-2307	818-2308
.06	.35	818-2356	818-2357	818-2358
.06	.40	818-2406	818-2407	818-2408
.06	.45	818-2456	818-2457	818-2458
.06	.50	818-2506	818-2507	818-2508
.06	.55	818-2556	818-2557	

ZenFlex™ – Assorted - Pack of 6

Taper	Tip	21 mm	25 mm
.04	.20		
.04	.25		
.04	.30		
.04	.35	818-1421	818-1425
.04	.40		
.04	.45		
.06	.20		
.06	.25		
.06	.30		
.06	.35	818-1621	818-1625
.06	.40		
.06	.45		

elements™ Connect & Apex Connect

Cordless Endodontic Motor and Electronic Apex Locator

An Interconnected System



Dual Light Indicators

With intuitive light indicators in both motor handpiece and the Apex file clip, you'll have greater visibility for more confident shaping.



Patient Safety

The intuitive, easy-to-see smart light and audible indicators, as well as a large, bright viewing display alert you when you're reaching the apex. May be used independently or as a connected system.



Portable Convenience

Easily move between operatories with this interconnected system; lightweight, ergonomic and cordless design.



Shape with Confidence

View real-time working length information during procedures with a smart light indicator that changes color, as well as audible indicators, as you reach the apex.

Built-in Accuracy

Ensure measurement accuracy with Apex Connect's automatic self-calibration feature that activates every time the device is turned on.

Continuous Use



Two removable batteries are included to ensure one is always charged so you can complete your procedures safely without interruption.



Versatile Motions Versatile Motions

With Adaptive, Reciprocation and Rotary motions in one motor, elements Connect allows offices to maintain their existing techniques and protocols.

Preset

9 Kerr preset file settings, 1 reciprocating setting and 4 customizable settings.

elements™ Connect	REF/Part No.
elements Connect Cordless Motor Kit -EU	815-1801
elements Connect AC/DC Adapter	815-1906
elements Connect Contra Angle	815-1908
elements Connect Charging Base	815-1909
elements Connect Battery Pack	815-1910

Accessories	REF/Part No.
elements/Apex Connect Power Cord - EU	815-1805

Apex Connect	REF/Part No.
Apex Connect Kit - EU	815-1803
Apex Connect AC/DC Adapter	815-1907
Apex Connect Probe Cord	815-1912
Apex Connect Lip Hook	815-1913
Apex Connect File Holder Adapter	815-1914
Apex Connect File Holder A	815-1915
Apex Connect File Holder B	815-1916
Apex Connect Replacement Battery	815-1722

elements™ IC

Cordless Obturation System

The cordless elements™ IC is the latest complete and reliable obturation system that combines a Downpack heat source with a Backfill extruder. Get excellent, predictable results faster and easier: rely on its longer lasting battery (compared to elementsfree, Data on File), inductive charging, and a comfortable, ergonomic design



Easy to use

feel free and comfortable without wires.



Ergonomic

comfortable and balanced grip



Inductive Charging:

no electrical connectors between handpieces and base



At least 16 canals on a single charge

of the Backfill at device default temperature, using recommended settings (more than double compared to elementsfree)¹



3D fill

high-quality 3D obturation of the root canal system



Less idle time thanks to faster extrusion²

control how fast you want the Gutta Percha to flow out of the cartridge



Compatible with most common cleaning solutions

handpieces are easy to clean with no electronic connections



Full charge less than 3 hrs

get ready faster



Easy to replace battery

control your battery with a simple and fast operation





Downpack

The Downpack device provides fast heating of the heat plugger with precisely controlled temperature and timing, making it suitable for single-motion downpack obturation of the apical portion of the root canal.

Total control of the procedure

adjustable heating range from 140°C to 400°C

Comfort without compromises

360° activation ring

Ready when you are

heats to 200°C in less than 0.5 seconds



Backfill

The ergonomic Backfill device features a motorized extruder system for precise temperature and speed control for a 3D obturation of the root canal system, utilizing single-use gutta percha cartridges.

Plan and control your procedure

Gutta percha level indicator

Adjustable temperature range

From 100°C to 230°C

Cinicians' comfort

aerogel insulation surrounds the heating element

Reduced extrusion time

At least 20% compared to elementsfree*

Control the gutta percha flow

Customizable motor speed for a reduced extrusion time

1. more than double compared to elementsfree, Data on File

2. Compared to elementsfree, Data on File

elements™IC – Accessories and Spares	REF/Part No.
elementsIC – Dual Charger	973-0610
elementsIC – Single Charger	973-0612
elementsIC – Transformer	973-0615
elementsIC – Power Cord, Type F (EU)	973-0616-TYPEF
elementsIC – Battery	973-0620
Buchanan Heat Pluggers (XF, F, FM, M, ML)	952-0003
Buchanan Heat Plugger Fine .06 Taper	952-0004
Buchanan Heat Plugger Fine Medium .08 Taper	952-0005
Buchanan Heat Plugger Medium .10 Taper	952-0006
Buchanan Heat Plugger Medium/Large .12 Taper	952-0007
Buchanan Heat Plugger Extra Fine .04 Taper	952-0031

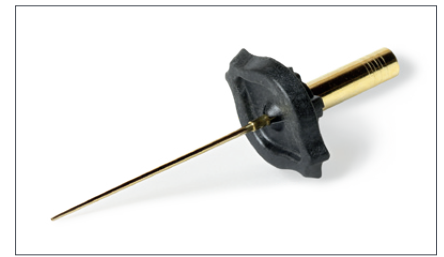
elements™IC – EU / Type F	REF/Part No.
elementsIC – Obturation System (EU)	973-0600-TYPEF
elementsIC – Downpack Unit (EU)	973-0602-TYPEF
elementsIC – Backfill Unit (EU)	973-0604-TYPEF

Elements™ Gutta Percha Cartridges

Innovative Gutta Percha cartridges

Compatible with the Elements Obturation and elements™free systems, each cartridge contains enough gutta percha to fill up to four canals. The specially designed, highly durable needle can be pre-bent to fit the patient's canal anatomy. Moreover, being 5 mm longer gives the user greater ability to reach the working length of the canal.

The unique copper and gold plating conducts heat more efficiently, reducing the risk of the gutta-percha losing heat as it passes through the needle and into the canal chamber.



Elements Gutta Percha Cartridge

Elements™ Gutta Percha Cartridges	REF/Part No.
Elements Gutta Percha Cartridge Medium 23GA - Copper - Pack of 10	972-2500
Elements Gutta Percha Cartridge Light 25GA - Copper - Pack of 10	972-2501
Elements Gutta Percha Cartridge Heavy 23GA - Copper - Pack of 10	972-2502
Elements Gutta Percha Cartridge Medium 23GA - Gold - Pack of 10	972-1002
Elements Gutta Percha Cartridge Light 25GA - Gold - Pack of 10	972-1003
Elements Gutta Percha Cartridge Heavy 23GA - Gold - Pack of 10	972-1005

Buchanan Hand Plugger

These high-quality pluggers are shaped to closely match the final root canal preparation. This maximises condensation forces on the softened obturation material without placing undue stress on the root canal system.

Featuring both a tapered NiTi end and a stainless steel end, Buchanan hand pluggers can be used in all common obturation techniques, including warm and cold condensation. The pluggers are also ideal for back-filling canals. The colour-coded NiTi end can be used for finishing condensation procedures, even in the most radically curved canals. Both ends condense and control the gutta-percha.

Buchanan Hand Plugger	REF/Part No.
Buchanan Hand Plugger 0	974-0060
Buchanan Hand Plugger 1	974-0058
Buchanan Hand Plugger 2	974-0059



Buchanan Hand Plugger 0



Buchanan Hand Plugger 1



Buchanan Hand Plugger 2

OptiBond™ Solo™ Plus

Single component total-etch dental adhesive

OptiBond™ Solo™ Plus is a total-etch, single-component dental adhesive for virtually every clinical application. Ethanol-based, 15% filled with proprietary 0.4µm filler, OptiBond Solo Plus actually reinforces dentine tubules at much greater depths than unfilled or nano-filled systems. This means improved long-term stability and great bond strengths with direct and indirect applications.



OptiBond™ Solo™ Plus	REF/Part No.
OptiBond™ Solo™ Plus – Bottle Kit – 10 ml	29670
OptiBond™ Solo™ Plus – 5 ml Bottle Refill	29692
OptiBond™ Solo™ Plus – Unidose Refill pack – 100 pcs	29669 E

OptiBond™ Gel Etchant

37.5% phosphoric acid gel

Designed for dentine and enamel etching, the vibrant purple colour of the Kerr Gel Etchant provides excellent visibility during placement. The viscosity ensures that there will be no running or separation. Rinses clean and easily with minimum effort and features the convenience of syringe delivery.

Gel Etchant	REF/Part No.
Gel Etchant Pack – 3 x 3 g Syringes, 30 Tips	31297
Gel Etchant Economy Pack - 30 g Syringe, 2 empty intraoral Syringes, 30 Tips	34632
30 Disposable Gel Etchant Tips	26909



Gel Etchant Pack



Gel Etchant Economy Pack

OptiBond™ eXTRa Universal

Two-component universal adhesive

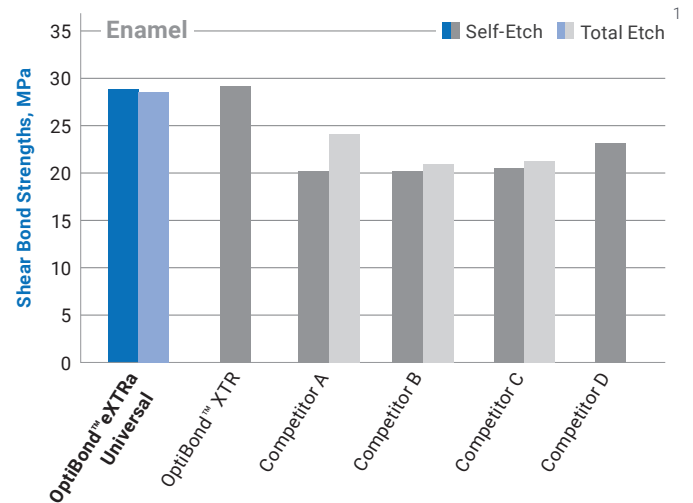
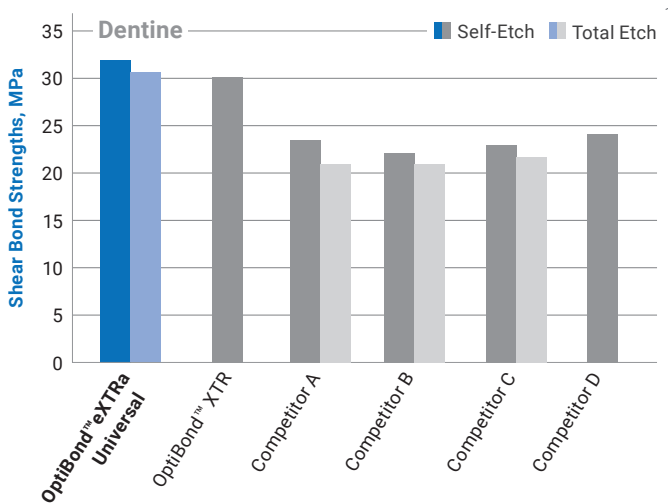
Introducing OptiBond eXTRa Universal, the bonding agent from KaVo Kerr with unique Smart pH technology and patented formula enriched with GPDM monomer and the Ternary Solvent System.

- Outstanding compatibility with virtually all types of cements, composites and core build-up materials, eliminating the need for auxiliary product
- Easy and consistent two-bottle protocol with any etching technique
- Full reliability afforded by OptiBond technology, known as the “Gold Standard” in adhesion



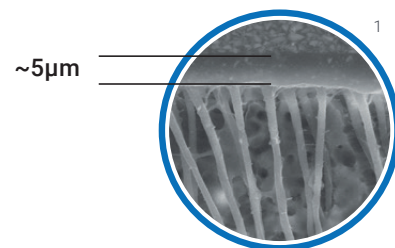
Bond strength to enamel and dentine

OptiBond™ eXTRa Universal yields outstanding results ensuring superior bond strength compared to leading competitors* on both dentine and enamel. This offers a consistent outcome under different etching techniques and substrates.



Imperceptible film thickness

The unique formula has a very low filler load (only 15%), producing a film so thin it is not visible to the naked eye. The result is highly aesthetic without, however, compromising strength.

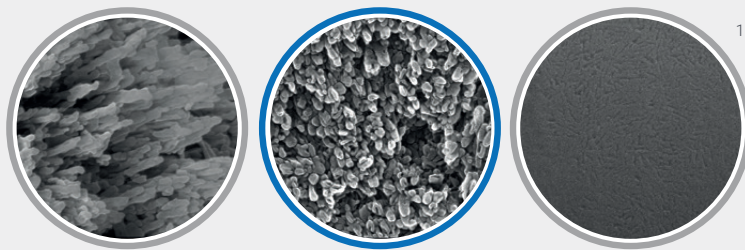


OptiBond™ eXTRa Universal

Effective plug and seal action

The Primer component is very acidic and hydrophilic, resulting in unique nano-etching capability and outstanding dentinal tubule penetration. The Adhesive component is hydrophobic, offering efficient polymerisation to boost mechanical strength, bond durability and marginal integrity.

Uncut enamel – microscope view 50,000 x

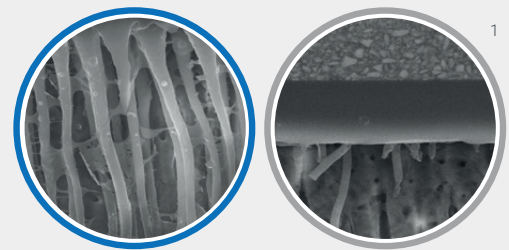


Kerr Gel Etchant

OptiBond eXTRa Universal
Self-Etch mode

Leading Competitor
Self-Etch mode

Dentine tubules – microscope view 20,000 x



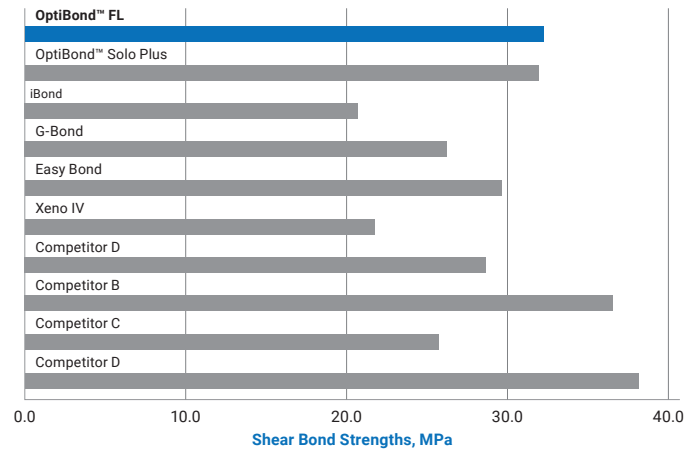
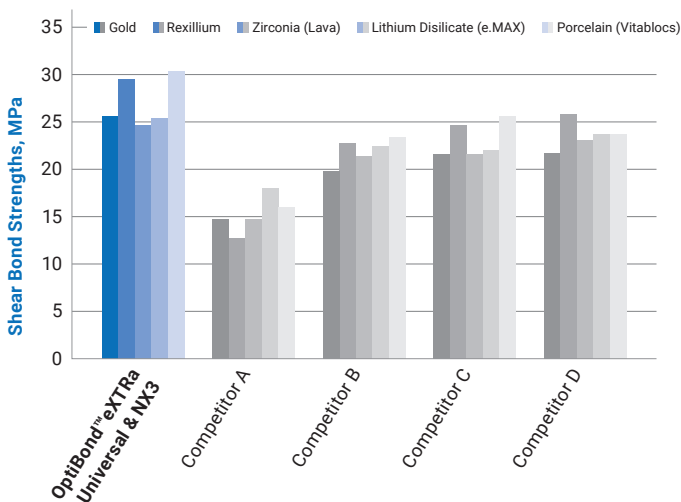
OptiBond eXTRa Universal
Self-Etch mode

Leading Competitor
Self-Etch mode

* Compared to Scotchbond™ Universal, Prime&Bond™ Elect, Adhese™ Universal, Clearfil SE Protect, Clearfil Universal Bond Quick, Futurabond U to Dentine and enamel on Self-Etch and Total Etch mode; compared to Clearfil SE Bond 2 to Dentine and enamel on Self-Etch Mode. Samples were prepared per individual manufacturer's instruction for use.

High shear bond strength and full compatibility

The combination of OptiBond™ eXTRa Universal and NX3 universal adhesive cement proved to deliver superior bond strength to dentine without the need for auxiliary products, compared to leading competitors**. So you can experience predictable outcomes with the simplicity of a consistent protocol.



OptiBond™ eXTRa Universal	REF/Part No.
OptiBond™ eXTRa Universal – Bottle Kit – 10 ml	36658
OptiBond™ eXTRa Universal – Unidose Kit – 100 pcs	36659
OptiBond™ eXTRa Universal – 5 ml Bottle Refill – Primer	36660
OptiBond™ eXTRa Universal – 5 ml Bottle Refill – Adhesive	36661
Applicators – 50 Applicators x 4 Boxes	24680



OptiBond™ eXTRa Universal – Bottle Kit

OptiBond™ Universal

Single-component universal dental adhesive

OptiBond™ Universal is the one-bottle dental bonding agent that combines the reliability of patented OptiBond GPDM technology with the ease of use of a universal solution.

It offers reliable bond strength to all surfaces and substrates, in any etching technique. Efficacy and flexibility coming together at last.

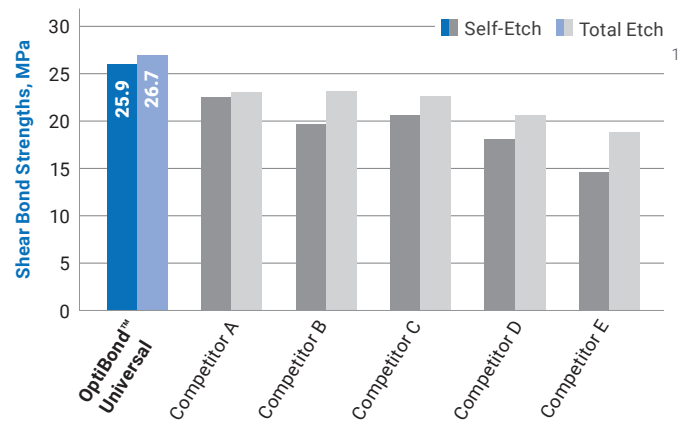
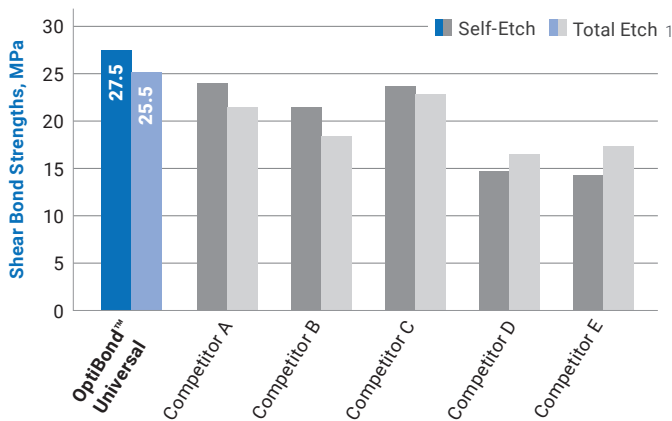
- One bottle. One coat
- Proven strength
- Complete versatility
- Protection against post-operative sensitivity



Bond strength to enamel and dentine

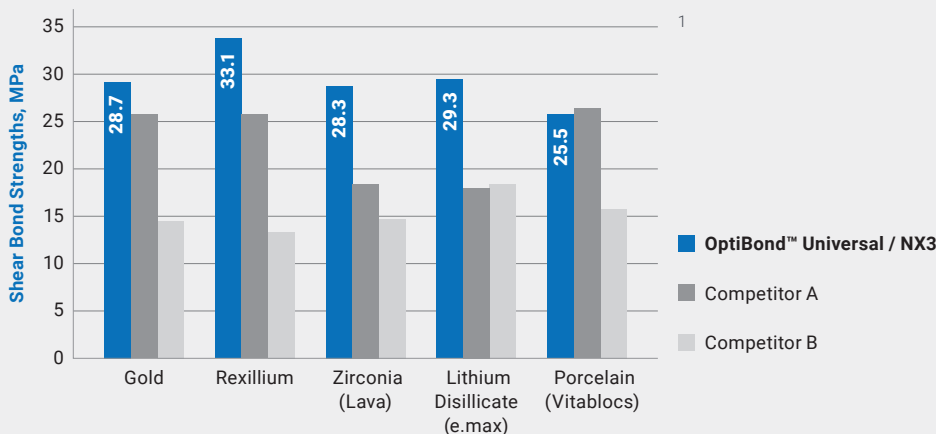
OptiBond Universal yields effective bond strength on both dentine and enamel.

It creates maximum flexibility by demonstrating great results under different etching techniques.



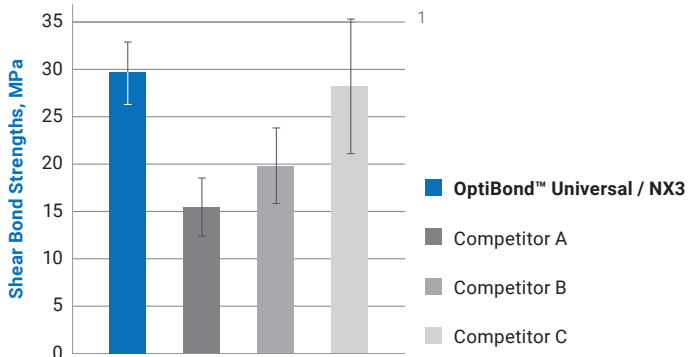
Bond strength to various dental substrates

The combination of OptiBond Universal and NX3 universal adhesive cement facilitates high levels of indirect bond strength to various dental substrates, without the need for a separate ceramic or metal primer.



Bond strength with cement

Using OptiBond Universal and NX3 cement together enhances bond compatibility and promotes high levels of indirect bond strength to dentine.



OptiBond™ Universal	REF/Part No.
OptiBond™ Universal – Bottle Kit – 5 ml	36517
OptiBond™ Universal – Unidose Kit – 100 pcs	36518
OptiBond™ Universal – 5 ml Bottle Refill	36519
Applicators – 50 Applicators x 4 Boxes	24680



OptiBond™ Universal – Bottle Kit

OptiBond™ FL

Filled, light-cure total-etch dental adhesive

Since its launch in 1995, OptiBond™ FL has established the standard in adhesive technology, validated by long-term clinical studies and recommended as the gold standard by leading dental universities worldwide.

- Unique structural bond with 48% filler load
- Efficient application flow – one-coat primer, one-coat adhesive, one-light curing; wet or dry preparations
- High radiopacity, making X-ray detection easy
- Availability in bottle and Unidose delivery
- Proven long-term performance



OptiBond™ FL	REF/Part No.
OptiBond™ FL – Bottle Kit – 16 ml	26684 E
OptiBond™ FL – Unidose Kit – 50 pcs	33352 E
OptiBond™ FL – 8 ml Bottle Refill – Primer	25881 E
OptiBond™ FL – 8 ml Bottle Refill – Adhesive	25882 E



OptiBond™ FL – Bottle Kit

Harmonize™

Universal composite with Adaptive Response Technology

Harmonize™ begins with ART, Adaptive Response Technology, the nanoparticle filler system that makes achieving lifelike restorations easier than ever before. It is formed of 81% inorganic material by weight, with an average primary particle size of less than 50 nm.

It is the ART in Harmonize that enables:

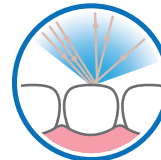
- Adaptive reflection to the light wavelength for an enhanced chameleon effect
- Superior gloss retention and easier polishability
- Adaptive viscosity for an easy shape of the composite and prevention of slumping
- Minimised stickiness and simplified carving
- Better curing efficacy for a long-lasting performance.



Light reflection like a natural tooth

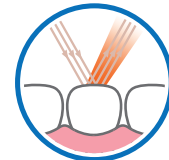
Just like a natural human tooth, and unlike other universal composites, Harmonize adapts to the light wavelength by reflecting diffuse light at lower wavelengths and specular light at higher wavelengths. This results in better blending than leading composites.¹

Lower wavelengths
- Blue colour -

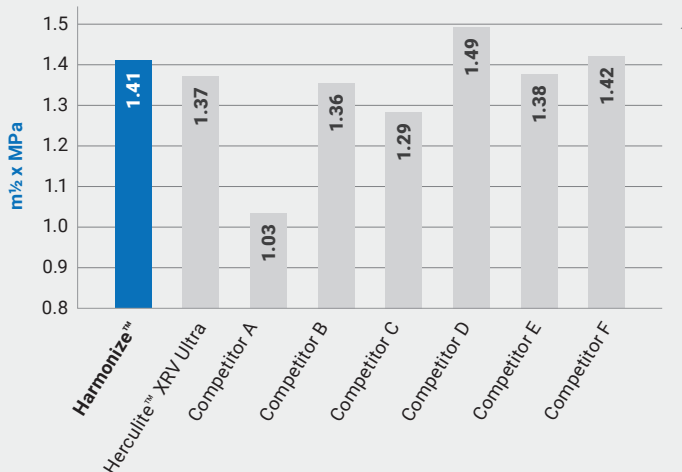


Diffuse reflection

Higher wavelengths
- Red colour -



Specular reflection



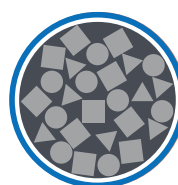
Proven mechanical strength

Harmonize demonstrates superior strength to other composites.

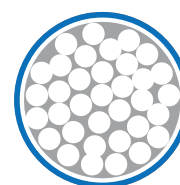
Spherical shape

The spherical shape of the ART filler system is carefully controlled to maximise loading, minimising stickiness and simplifying carving. This reduces the risk of pullback and cavosurface voids.

Competition



Harmonize



Harmonize™ – Syringe Intro Kit REF/Part No. 36633

4 x 4 g Syringe (1 x Dentine A3, 1 x Dentine A3.5, 1 x Enamel A2, 1 x Enamel A3), Instructions for Use

Harmonize™ – Unidose Intro Kit REF/Part No. 36634

40 x 0.25 g Unidose (10 x Dentine A3, 10 x Dentine A3.5, 10 x Enamel A2, 10 x Enamel A3), Instructions for Use

Harmonize™ – Syringe Advanced Kit REF/Part No. 36635

8 x 4 g Syringe (1 x Dentine A2, 1 x Dentine A3, 1 x Dentine A4, 1 x Enamel A2, 1 x Enamel A3, 1 x Incisal Amber, 1 x Incisal Clear, 1 x Incisal Grey), Instructions for Use

Harmonize™ – Refills

Shade	1 x 4 g Syringe	20 x 0.25 g Unidose
Harmonize – Dentine A1	36545	36571
Harmonize – Dentine A2	36536	36572
Harmonize – Dentine A3	36546	36573
Harmonize – Dentine A3.5	36547	36574
Harmonize – Dentine A4	36548	36575
Harmonize – Dentine B3	36549	36576
Harmonize – Dentine C4	36550	36577
Harmonize – Dentine XL2	36551	36578
Harmonize – Enamel A1	36552	36579
Harmonize – Enamel A2	36537	36542
Harmonize – Enamel A3	36553	36581
Harmonize – Enamel A3.5	36554	36582
Harmonize – Enamel A4	36555	36583
Harmonize – Enamel B1	36556	36584
Harmonize – Enamel B2	36557	36585
Harmonize – Enamel B3	36558	36586
Harmonize – Enamel B4	36559	36587
Harmonize – Enamel C1	36560	36588
Harmonize – Enamel C2	36561	36589
Harmonize – Enamel C3	36562	36590
Harmonize – Enamel C4	36563	36591
Harmonize – Enamel D2	36564	36592
Harmonize – Enamel D3	36565	36593
Harmonize – Enamel D4	36566	36594
Harmonize – Enamel XL	36567	36595
Harmonize – Incisal Translucent Amber	36538	36543
Harmonize – Incisal Translucent Blue	36568	36597
Harmonize – Incisal Translucent Clear	36569	36598
Harmonize – Incisal Translucent Grey	36570	36599
Harmonize – Incisal Translucent SuperClear	36539*	



Harmonize™ – Syringe Intro Kit



Harmonize™ – Unidose Intro Kit



Harmonize™ – Syringe Advanced Kit

OptiShade™

Simplified Universal Composite System



Simplify Shade-matching

Shade selection made easier and faster. OptiShade matches all 16 VITA classical shades with just 3 shades: Light, Medium, Dark.

Adaptive Response Technology (ART)

The ART filler network, a proven technology found in Harmonize, helps you achieve lifelike restorations with exceptional strength and unmatched esthetics.

Streamline Inventory Management

Save time and money with minimal shades to meet almost all your composite needs. Declutter your shelves, avoid the burden of re-ordering too many different part numbers, and reduce or eliminate expired products.

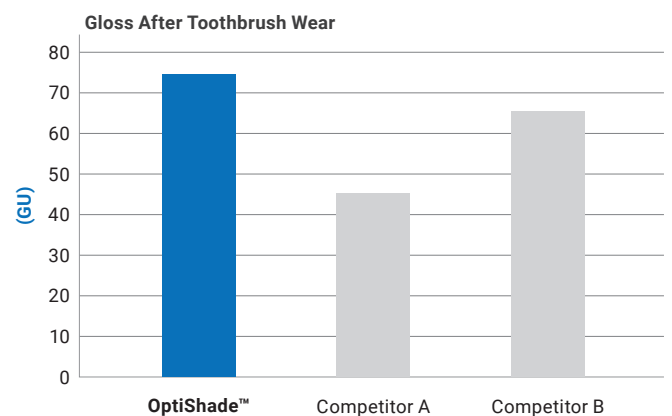
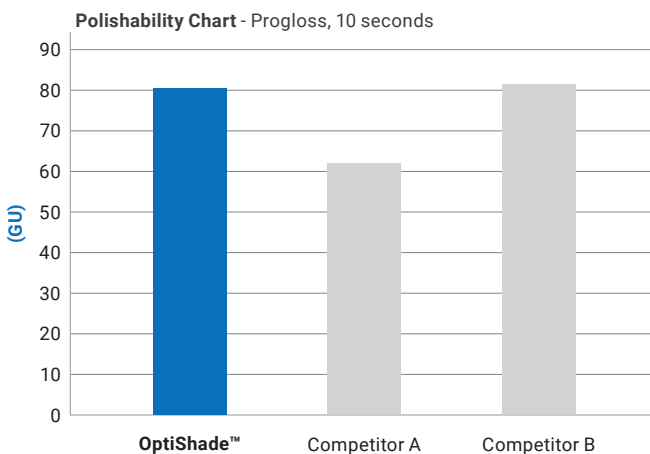
Universal For All Cavity Classes

Use OptiShade with confidence in all cavity classes without the need for a blocker, unlike other competitors.¹



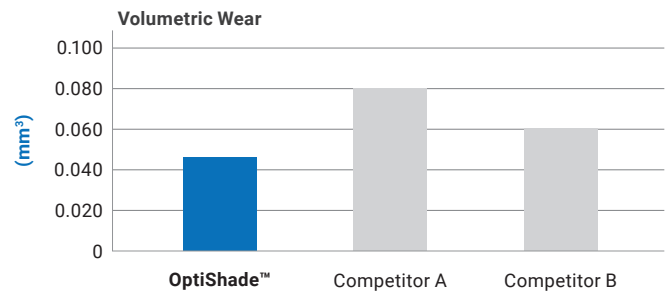
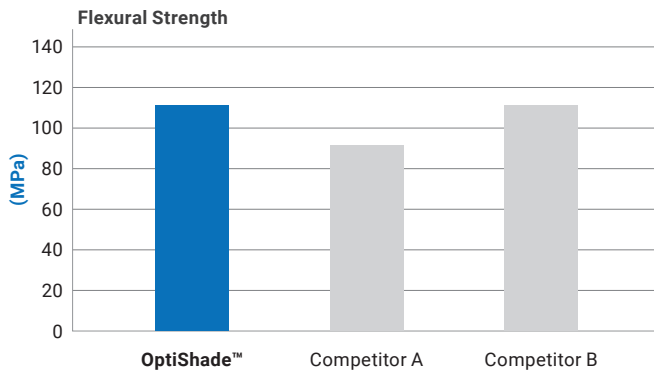
Restorations That Shine

OptiShade's smaller particle size of 50nm allows for better polishability and ability to maintain luster and gloss over time.¹



Longer-lasting Restorations

ART system allows for high loading of 81% for excellent strength, better resistance to chipping and fracture overtime.



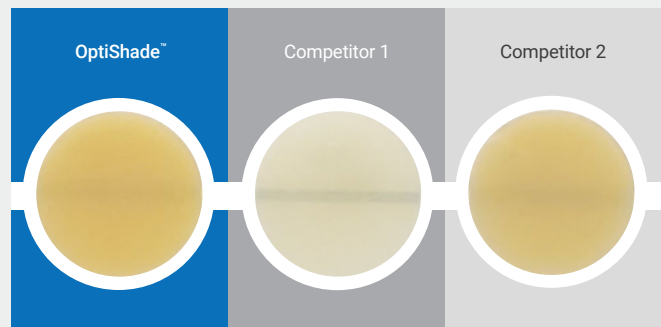
Excellent Radiopacity

The more radiopaque, the easier it is to distinguish the restoration from the tooth structure under a radiograph. OptiShade at 300% AI is almost twice as radiopaque as competition.¹



Optimal Translucency

OptiShade provides ideal opacity to mimic tooth structure, to better mask underlying tooth stains, and blend well with surrounding dentition, resulting in a more lifelike restoration.¹



OptiShade™	REF/Part No.
OptiShade – 4g Syringe – Light	37111
OptiShade – 4g Syringe – Medium	37112
OptiShade – 4g Syringe – Dark	37113
OptiShade – 4g Syringe – Bleach White	37114
OptiShade – 4g Syringe – Universal Opaque	37115
OptiShade – 20x 0.25g Unidose – Light	37116
OptiShade – 20x 0.25g Unidose – Medium	37117
OptiShade – 10x 0.25g Unidose – Dark	37118
OptiShade – 10x 0.25g Unidose – Bleach White	37119
OptiShade – 10x 0.25g Unidose – Universal Opaque	37120

SimpliShade™ Bulk Fill

Universal Bulk-fill Composite

Simplify with One Shade and One Step

Beautiful restorations just got simpler, with SimpliShade™ Bulk Fill. You can skip the capping layer with a one-step placement and reduce inventory requirements with one shade for all 16 VITA® classical shades.

Powered by Ternary Adaptive Response Technology (ART3), SimpliShade Bulk Fill is easy to handle with low shrinkage stress.

SimpliShade™ Bulk Fill is indicated for **Class I-V restorations** - direct placement of anterior and posterior restorations, core build-ups, and repair of defects in restorations.



Handling Properties

Adaptive rheological response technology reduces viscosity during manipulation for easier sculpting and anatomy creation.

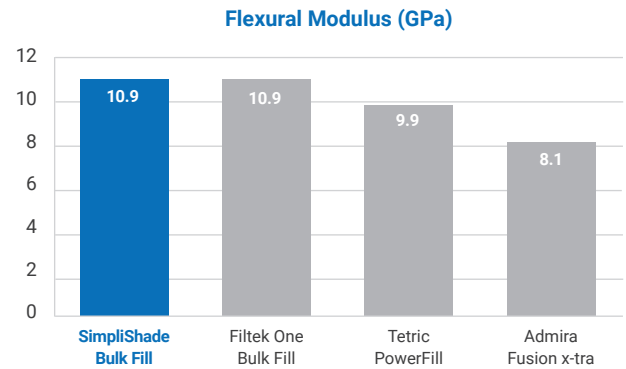
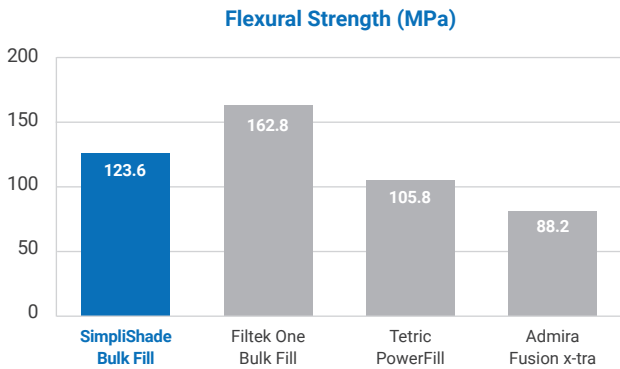


ART3: A New Way to Bulk Fill

Achieve lifelike restorations with the next generation of clinically proven Adaptive Response Technology (ART) found in Harmonize™ and OptiShade Universal Composite. Powered by Enhanced Adaptive Response Technology, SimpliShade Bulk Fill offers easy handling and low shrinkage.

Flexural Strength

SimpliShade Bulk Fill shows slightly lower flexural strength compared to Filtek™ One Bulk Fill but higher flexural strength than Tetric® PowerFill and Admira® Fusion x-tra, resulting in better long-term resistance to chipping and higher fracture resistance.

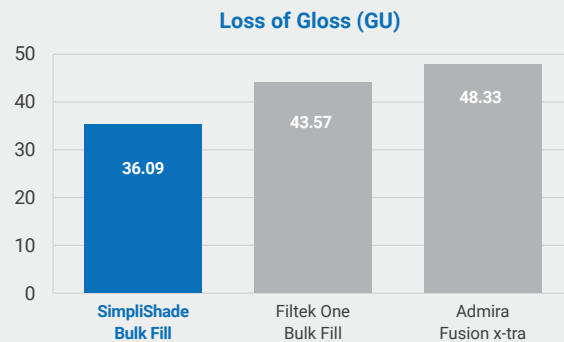


Authors: Drs. Jack L. Ferracane and Carmem S. Pfeifer, Oregon Health & Science University, Portland, OR.

Gloss Retention

SimpliShade Bulk Fill has the highest gloss retention compared to Filtek One Bulk Fill and Admira Fusion x-tra. This means that the esthetic initial gloss of the restoration is maintained for longer.

Author: Prof. Dr. Nate Lawson, University of Alabama at Birmingham, Birmingham, AL.



Customer Testimonials



"SimpliShade Bulk Fill revolutionizes my approach to composites in molar and premolar restorations. Its convenience and ease of use with basic dental instruments are unmatched."

Dr. Maciej Mikołajczyk*
Lodz, Poland



"SimpliShade Bulk Fill offers a three-in-one solution with its universal shade, ideal consistency and excellent adaptability for simplicity and efficiency."

Prof. Joseph Sabbagh*
Brussels, Belgium



"Composite with wonderful consistency that allows easy application and modeling. Quick and simple work protocol, great shading."

Dr. Dimitar Kosturkov*
Sofia, Bulgaria

SimpliShade™ Bulk Fill	REF/Part No.
SimpliShade Bulk Fill Composite Syringe - 4g	37211
SimpliShade Bulk Fill Composite Unidose 20x 0.25g Pack	37212

* Paid consultant for Kerr

SimpliShade™ Bulk Fill Flow

Universal Bulk-fill Flowable Composite

Simplify with One Shade and One Step

Simplify with One Shade and One Step

Reach every area of the tooth's anatomy while saving time with SimpliShade Bulk Fill Flow. Requiring just one shade to match all 16 VITA® classical shades, SimpliShade Bulk Fill Flow easily adapts to the cavity floor – with exceptional durability and depth of cure.

SimpliShade™ Bulk Fill Flow is indicated for base/liner under **Class I** and **Class II** direct restorations, pit and fissure sealant, restoration of small cavities, **Class III** and **Class V** restorations, blocking out undercuts, small core build-ups, and repair of resin and acrylic provisional restorations.



Save Time

Simplify your workflow with just one step to cure up to 4mm, before adding a capping layer.



Go with the Flow

Fill every area of the tooth's anatomy with a self-leveling bulk fill flowable that easily adapts to the cavity floor.



Add Confidence

Restore confidently with a flowable bulk fill composite that offers comparable or higher mechanical strength than the competitors.

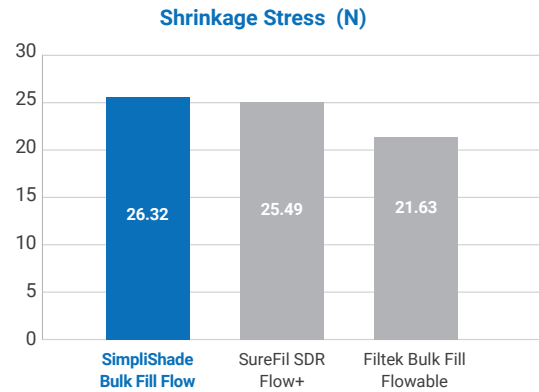


Lower Shrinkage

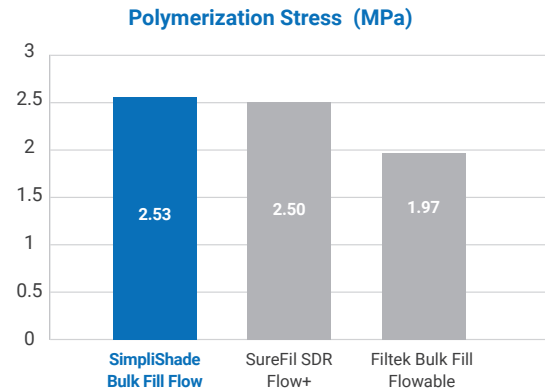
Helps assure a long-lasting restoration with lower polymerization shrinkage and shrinkage stress when compared to other bulk fill brands.

Flexural Strength

SimpliShade Bulk Fill shows slightly lower flexural strength compared to Filtek™ One Bulk Fill but higher flexural strength than Tetric® PowerFill and Admira® Fusion x-tra, resulting in better long-term resistance to chipping and higher fracture resistance.



Author: Prof. Dr. Nate Lawson, University of Alabama at Birmingham, Birmingham, AL

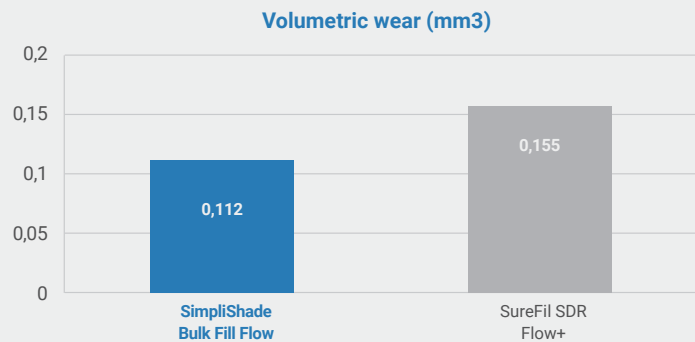


Authors: Drs. Jack L. Ferracane and Carmem S. Pfeifer, Oregon Health & Science University, Portland, OR

Gloss Retention

SimpliShade Bulk Fill has the highest gloss retention compared to Filtek One Bulk Fill and Admira Fusion x-tra. This means that the esthetic initial gloss of the restoration is maintained for longer.

Author: Prof. Dr. Nate Lawson, University of Alabama at Birmingham, Birmingham, AL



Customer Testimonials



“Exceptional handling perfectly complements the Snow-plow restoration technique from StyleItaliano.”

Prof. Angelo Putignano*
Ancona, Italy



“An impressive and innovative bulk fill flowable composite with great marginal adaptation, fast application with self-leveling and low shrinkage characteristics.”

Dr. Iulian-Costin Lupu*
Iasi, Romania



“Exceptional combination of good handling, low translucency and voids free flowable bulk fill composite with great radio-opacity.”

Dr. Hossam Kamel*
Alexandria, Egypt

SimpliShade™ Bulk Fill Flow	REF/Part No.
SimpliShade Bulk Fill Flow Syringe - 2x 2g	37217
SimpliShade Bulk Fill Flow Unidose 20x 0.25g Pack	37218

SonicFill™ 3

Single-Fill™ Bulk-fill dental composite system

SonicFill™ 3 is the unique bulk-fill composite system powered by sonic energy, expertly blending KaVo technology and Kerr material knowledge into one system. A patented rheological modifier reacts to sonic energy:

- **Sonic energy applied:** viscosity drops for quick and precise placement
- **Sonic energy interrupted:** viscous non-slumping state for great carving

SonicFill 3 does not require liner nor capping layer, and its unique features in terms of adaptation and depth of cure of up to 5 mm make it ideal for all larger cavity restorations. The lower shrinkage stress than other bulk-fill or conventional composites ensures marginal integrity and reduces post-operative sensitivity.

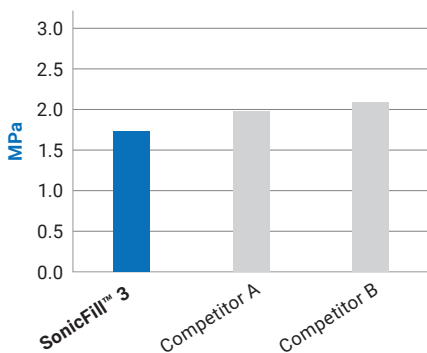
All this makes it possible to achieve a successful restoration in a simple single step.



Proven outcomes. A step up from the rest.

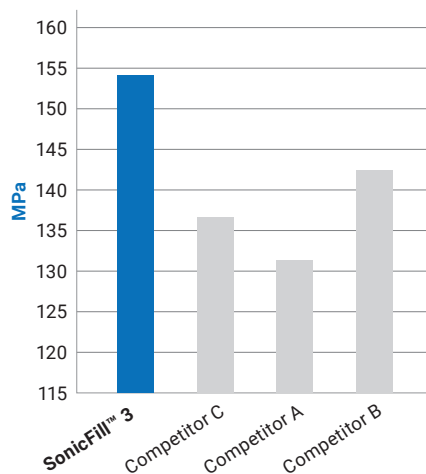
Shrinkage Stress

Restore confidently with a flowable bulk fill composite that offers comparable or higher mechanical strength than the competitors.



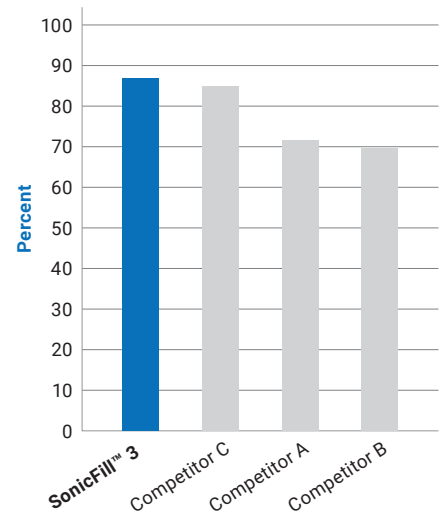
Flexural Strength

SonicFill™ 3 has a higher flexural strength than competitors.*

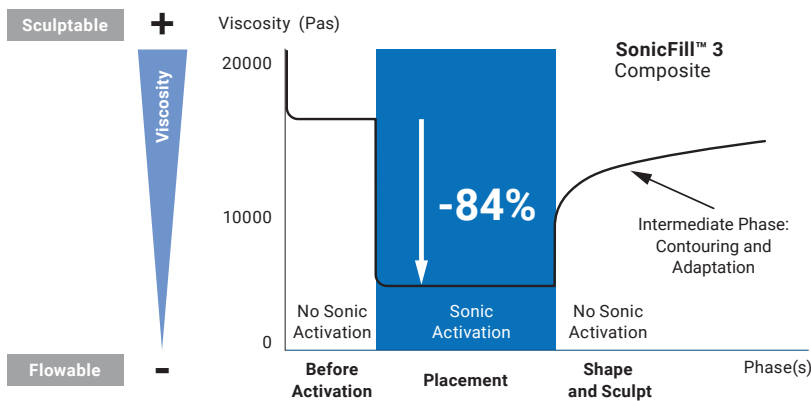


Degree of Conversion

At 5mm, SonicFill™ 3 showed 86.6% hardness at the bottom when compared to the top.*



Activation - Efficient Liquefaction

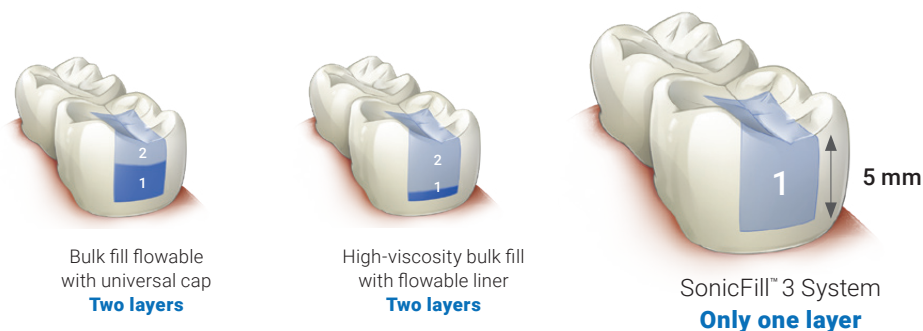


Unique, patented technology

SonicFill's secret lays in its highly-filled proprietary resin with special modifiers that react to sonic energy applied through the handpiece. When sonic energy is applied the viscosity drops (up to 84%), enabling quick placement and precise adaptation to the cavity walls. When the sonic energy is stopped, the composite returns to a more viscous, non-slumping state that is perfect for carving and contouring.

The fewer steps, the less chance of misstep

SonicFill™ 3 replaces conventional time-consuming, multi-stage layering techniques with a SingleFill™ Composite System that eliminates the need for placing a liner or final capping layer.



SonicFill™ 3 – Intro Kit REF/Part aNo. 36715

1 x SonicFill Handpiece + Instructions for Use, 1 x Getting Started Pack (5 Unidose Tips and 5 Tooth Models), 10 x 0.2 g SonicFill 3 Unidose A1 Composite, 20 x 0.2 g SonicFill 3 Unidose A2 Composite, 30 x 0.25 g SonicFill 3 Unidose A3 Composite, Instructions for Use, Technique Guide

SonicFill™ 3 – Unidose Tips – 20 x 0.25 g	REF/Part No.
SonicFill 3 – Unidose Composite Refill A1	36711
SonicFill 3 – Unidose Composite Refill A2	36712
SonicFill 3 – Unidose Composite Refill A3	36713
SonicFill 3 – Unidose Composite Refill B1	36714

SonicFill™ – Handpiece REF/Part No. 1.007.7400

SonicFill Handpiece to activate SonicFill Unidose Tips. (Adjustable with 5 power settings)

SonicFill™ – Multiflex Couplings	REF/Part No.
SonicFill – Multiflex Coupling 465LED	10.073.197
SonicFill – Multiflex Coupling 457	0.553.1210
SonicFill – Multiflex Coupling 454N	0.553.1620



SonicFill™ 3 – Intro Kit



SonicFill™ 3 – Unidose Composite Refill

Vertise™ Flow

Self-adhering flowable composite

Vertise™ Flow is the first self-adhering flowable dental composite powered by OptiBond™ technology. It greatly simplifies direct restorative procedures by incorporating a bonding agent into a flowable, reducing steps and saving time.

Vertise™ – Test-Me Kit REF/Part No. 34398

1 x 2 g Syringe A2 shade, 10 Application Brushes, 10 Tips

Vertise™ – Assorted Kit REF/Part No. 34399

4 x 2 g Syringe in A2, A3, A3.5, UO, 40 Application Brushes, 40 Tips

Vertise™ – Paedodontic Kit REF/Part No. 34400

4 x 2 g Syringe in shades A1, B1, XL, Translucent, 40 Application Brushes, 40 Tips

Vertise™ – Refills REF/Part No.

2 x 2 g Syringes, 20 Application Brushes, 20 Tips

Vertise – A1	34401
Vertise – A2	34402
Vertise – A3	34403
Vertise – A3.5	34404
Vertise – B1	34405
Vertise – B2	34406
Vertise – Universal Opaque	34407
Vertise – XL	34408
Vertise – Translucent	34409

REF/Part No. 34410 REF/Part No. 34410

25 x Application Brushes and Tips



Vertise™ – Test-Me Kit



Vertise™ – Assorted Kit



Vertise™ – Refills

Herculite™ XRV Ultra Flow

Nanohybrid flowable composite

Herculite™ XRV Ultra Flow combines the long-standing expertise of the Herculite brand in an innovative flowable composite.

The Smart Placement Technology offered by a rheological additive helps reduce surface tension as the material contacts the tooth surface under pressure – allowing it to flow to the boundaries of the restoration.

The same additive encourages higher surface tension after the material has been placed. The formula also guarantees flexural strength as well as excellent gloss retention and easy polishability.



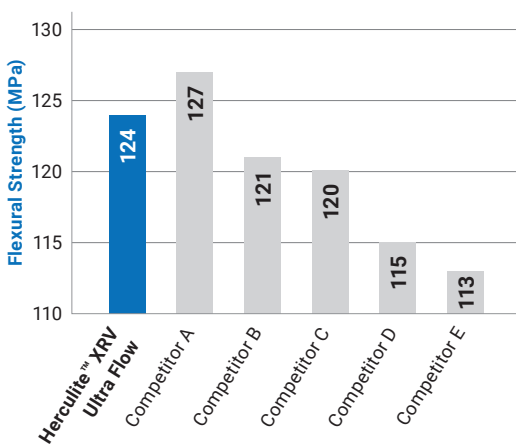
Herculite™ XRV Ultra Flow



A flowable with the performance you need

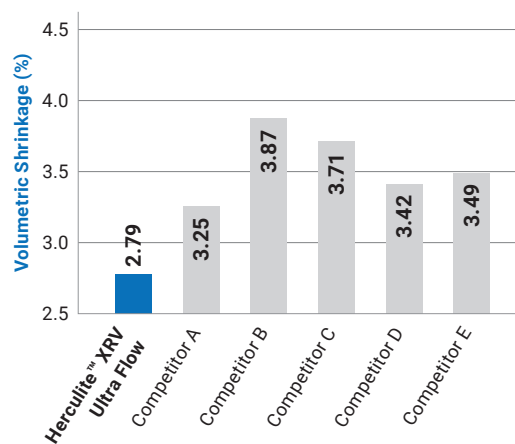
Outstanding flexural strength

Similar to its companion Herculite XRV Ultra, Herculite XRV Ultra Flow has excellent mechanical properties, including strength.



Low shrinkage

Leading experts cite low shrinkage as a critical feature of flowable composites; Herculite XRV Ultra Flow was specially designed with a high-filler loading rate for minimal polymerisation shrinkage.



Herculite™ XRV Ultra Flow – Refill Syringes	REF/Part No.
Herculite XRV Ultra Flow – A2	35408
Herculite XRV Ultra Flow – A3	35409
Herculite XRV Ultra Flow – A3.5	35410
Herculite XRV Ultra Flow – A4	35411
Herculite XRV Ultra Flow – B1	35412
Herculite XRV Ultra Flow – B2	35413
Herculite XRV Ultra Flow – C2	35414

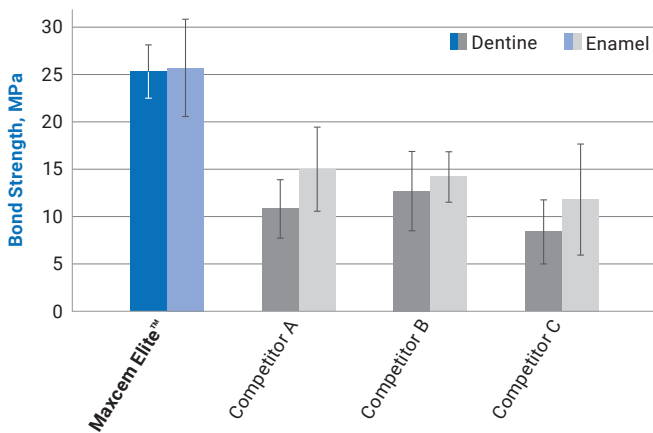
Herculite™ XRV Ultra Flow – Refill Syringes	REF/Part No.
Herculite XRV Ultra Flow – D2	35415
Herculite XRV Ultra Flow – XL1	35416
Herculite XRV Ultra Flow – XL2	35417
Herculite XRV Ultra Flow – Universal Opaque	35418
Herculite™ XRV Ultra Flow - Dispensing Tips	REF/Part No. 33370
50 x Dispensing Tips	

Maxcem Elite™

Universal resin cement

Maxcem Elite™ self-etch, self-adhesive resin cement for indirect restorations is simplicity refined, offering best-in-class adhesion when compared to other leading self-adhesive cements. Its thixotropic property facilitates the placement of material and clean-up.

- One-Peel™ clean-up, no hand mixing and no refrigeration required
- Dual-cure mechanism
- No colour shift
- Compatible with all indirect restorations



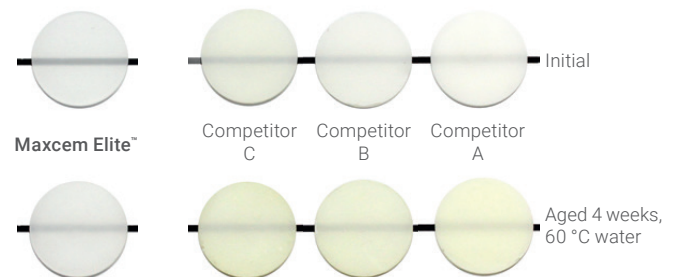
Bond strength to enamel and dentine

Maxcem Elite™ employs the same unique adhesive monomer used in Kerr's OptiBond family of bonding agents. The optimized resin matrix and filler systems improve wettability, resulting in greater adhesion to dentine.

No colour shift for better aesthetics

The colour change in Maxcem Elite is imperceptible, when compared to systems that contain tertiary amines.

Colour shift over time is better than leading self-adhesive or adhesive resin cements.





One-Peel™ clean-up for consistent outcomes

Maxcem Elite's thixotropic property facilitates the placement of material and easy clean-up.

Now Featuring Universal Flexibility

Maxcem Elite™ delivers high bond strength when used on its own. For restorations that require even higher bond strength, just pair Maxcem with a universal bonding agent like OptiBond™ Universal.

Maxcem Elite™ — Standard Kit REF/Part No. 34400

5 x 5 g Syringes (2 x clear, 1 x white, 1 x white opaque, 1 x Yellow), 24 x Automix Tips (regular),
16 x Automix Tips (wide opening), 8 x Intraoral Tips, 8 x Root Canal Tips, Technique Guide

Maxcem Elite™ — Value Kit REF/Part No. 34056

2 x 5 g Syringes (clear), 1 x 11.7 g Temp-Bond NE automix Syringe, 8 x Automix Tips (regular),
8 x Automix Tips (wide opening), 8 x Intraoral Tips, 8 x Temp-Bond Automix Tips, Technique Guide

Maxcem Elite™ — Mini Kit REF/Part No. 34057

1 x 5 g Syringe (clear), 5 x Automix Tips (regular), 4 x Automix Tips (wide opening), 4 x Intraoral Tips,
Technique Guide

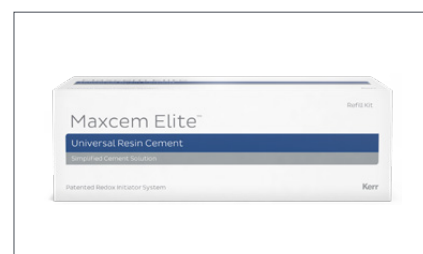
Maxcem Elite™ — Refills REF/Part No.

2 x 5 g Syringe, 8 x Automix Tips regular, 8 x Automix Tips with wide opening, 8 x Intraoral Tips, Technique Guide

Maxcem Elite — Clear	34058
Maxcem Elite — White	34059
Maxcem Elite — White Opaque	34060
Maxcem Elite — Yellow	34061

Maxcem Elite™ — Accessories REF/Part No.

Maxcem Elite — 40 x Mixing Tips (Regular)	34074
Maxcem Elite — 8 x Intraoral Tips — Automix Tips (Wide)	34075
Maxcem Elite — 8 x Root Canal Tips — Automix Tips (Wide)	34076



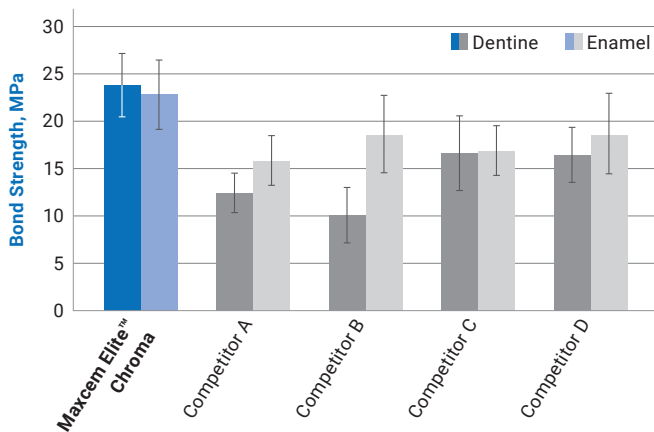
Maxcem Elite™ — Refills

Maxcem Elite™ Chroma

Universal resin cement with cleanup indicator

Maxcem Elite™ Chroma self-etch, self-adhesive resin cement for indirect restorations is the evolution of Maxcem Elite™. With the same formula, same bond strength, same performance with a unique feature: a gel state colour clean-up indicator that shows dentists the ideal time to remove excess cement.

It is suitable for use with all desired indirect restorations and substrates including zirconia, gold, rexillum, lithium disilicate, porcelain, composite and titanium.



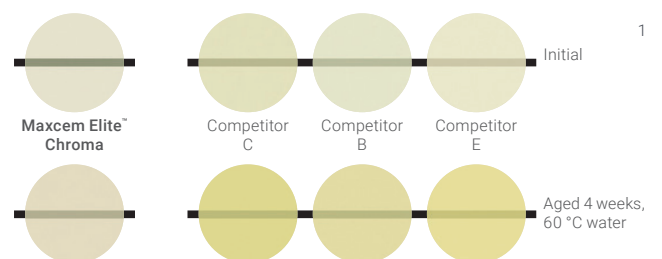
High bond strength

- Reliable and predictable
- Best-in-class adhesion compared to other leading self-adhesive cements
- 90% higher bond strength on dentine
- 65% higher bond strength on enamel
- Forms a strong and durable bond with various dental substrates

Automix delivery system

- Dual barrel, automix syringe system
- Comes with single-use automix tips
- Optional curved tips deliver desired amount of cement into restoration and/or tooth prep

Long-term colour stability



1. Data available on request

280% radiopacity

Outstanding radiopacity allows easy detection on a radiograph.

Dual cure

Pink disappears after both self-cure and light cure, allowing maximum flexibility.

Easy storage

No need to refrigerate.

One-peel™ clean-up

Cement is easy-to-remove in one peel, reducing the risk of leaving excess cement.



Use with desired substrates

- Zirconia
- Gold
- Rexillum
- Lithium disilicate
- Porcelain
- Composite

Colour clean-up indicator

Cement is pink when dispensed and gradually fades to the cement shade, indicating the optimal window of time to clean up excess cement.

Now Featuring Universal Flexibility

Maxcem Elite™ delivers high bond strength when used on its own. For restorations that require even higher bond strength, just pair Maxcem with a universal bonding agent like OptiBond™ Universal

Maxcem Elite™ Chroma – Standard Kit

REF/Part No. 36371

4 x 5 g Syringes (2 x Clear, 1 x White, 1 x Yellow), 16 x Automix Tips (Regular), 8 x Automix Tips (Wide), 8 x Intraoral Tips, 8 x Root Canal Tips, Technique Guide

Maxcem Elite™ Chroma – Refills

REF/Part No.

2 x 5 g Syringe, 8 x Automix Tips regular, 8 x Automix Tips with wide opening, 8 x Intraoral Tips, Technique Guide

Maxcem Elite Chroma – Clear	36372
Maxcem Elite Chroma – White	36373
Maxcem Elite Chroma – Yellow	36374

Maxcem Elite™ Chroma – Accessories

REF/Part No.

Maxcem Elite Chroma – 40 x Mixing Tips (Regular)	36375
Maxcem Elite Chroma – 8 x Root Canal Tips – Automix Tips (Wide)	36376
Maxcem Elite Chroma – 8 x Intraoral Tips – Automix Tips (Wide)	36377



Maxcem Elite™ Chroma – Refills

Temp-Bond Family

Temporary attachment. Permanent reliability.

Discover the range of Temp-Bond™ temporisation solutions:

High bond strength.

Excellent bond strength, yet easy-to-remove when desired. Designed to prevent leakage.

Easy-to-remove.

Easy removal of cement minimises potential damage to the prep or temporary

Flexible delivery choices.

Temp-Bond Original, Temp-Bond Clear and Temp-Bond NE are available in an automix syringe. Moreover, Temp-Bond and Temp-Bond NE are also available in Unidose and tubes, offering flexible delivery options.

Flows and mixes easily.

Delivers optimal consistency for solid, complete seating of restorations.



Temp-Bond™ Clear

Translucent provisional cement

Resin-based Temp-Bond™ Clear™ is the most translucent provisional cement available, ensuring superior aesthetics. Temp-Bond Clear offers dual curing for added security and flexibility, ease of handling, excellent mechanical retention and easy removal from preparations. Temp-Bond Clear is eugenol-free, allowing it to be used with resin luting cements.



Temp-Bond™ Clear™

Temp-Bond™ Clear – Automix Syringe REF/Part No. 33351EU

1 x 6 g Syringe; 10 x Mixing Tips

Temp-Bond™ Clear – Accessories REF/Part No.

Temp-Bond Clear – 50 x Automix Tip Refill

33361

Temp-Bond™

Temporary cement

Temp-Bond™ is a self-curing zinc-oxide eugenol-based temporary cement indicated for temporary crowns, bridges or splints, and for trial cementing permanent restorations. Its smooth flow allows for exceptional handling and results in effortless and complete restoration seating.

Temp-Bond™ – Automix Syringe REF/Part No. 33684

2 x 11.8 g Syringe, 20 x Mixing Tips

Temp-Bond™ – Introductory Pack (with Modifier) REF/Part No. 60058

1 x 50 g Tube Base, 1 x 15 g Tube Accelerator, 1 x 13 g Tube Modifier, 1 x Mixing Pad

Temp-Bond™ – Standard Pack (without Modifier) REF/Part No. 61087

1 x 50 g Tube Base, 1 x 15 g Tube Accelerator, 1 x Mixing Pad

Temp-Bond™ – Unidose REF/Part No. 31377

50 x 2.4 g Unidose

Temp-Bond™ – Refills REF/Part No.

Temp-Bond – 50 g Tube Base 60254

Temp-Bond – 15 g Tube Accelerator 60255

Temp-Bond – 13 g Modifier 61081

Mixing Pads – 70 x 100 mm 60913



Temp-Bond™ – Automix Syringe



Temp-Bond™ – Standard Pack



Temp-Bond™ – Unidose

Temp-Bond™ NE

Non-eugenol temporary cement

Temp-Bond™ NE™ non-eugenol temporary zinc-oxide cement offers an option for patients allergic to eugenol. It does not inhibit the polymerisation of permanent resin cements and acrylic temporaries, yet provides the same flow and retentive properties of Temp-Bond.



Temp-Bond™ NE – Automix Syringe REF/Part No. 33685

2 x 11.8 g Syringe, 20 x Mixing Tips

Temp-Bond™ NE – Standard Pack REF/Part No. 60256

1 x 50 ml Tube Base, 1 x 15 ml Tube Accelerator, 1 x Mixing Pad

Temp-Bond™ NE – Unidose REF/Part No. 31973

50 x 2.4 g Unidose

Temp-Bond™ NE – Refills REF/Part No.

Mixing Pads – 70 x 100 mm 60913



Temp-Bond™ NE – Automix Syringe



Temp-Bond™ NE – Standard Pack



Temp-Bond™ NE – Unidose

Demi™ Plus

Light emitting diode (LED) curing light

Thanks to the PLS technology, Demi Plus intermittently shifts the output intensity from a base of 1,100 mW/cm² to a peak of 1,330 mW/cm². This enables the Demi Plus to deliver a 5-second cure for A3 or lighter shades.

Enhanced Body Design

This curing light's exterior is made from Valox resin, a high-performance plastic that will protect and extend the life of your unit. In addition, the upgraded closed housing allows for easier cleaning and disinfection. Improved Cooling System and fan free for quiet operation.

True 5-second cure

Consistent output of Periodic Level Shifting (PLS) delivers a true 5-second cure for composite shades A3 and lighter.

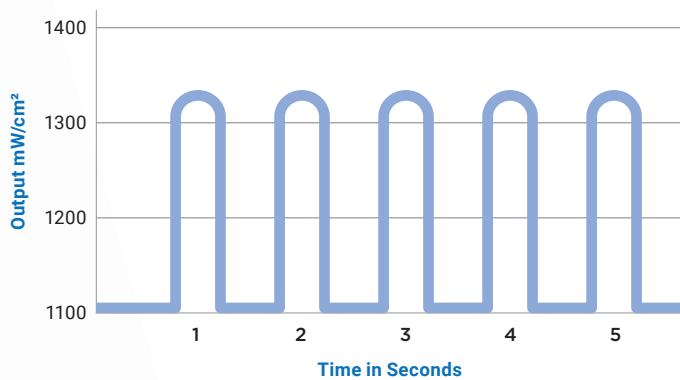
Never shuts down

Whisper-quiet fan and unique thermal control system keeps the unit cool for uninterrupted operation. Extends the overall life of the unit.



Advanced battery technology

The lithium-ion battery technology can yield 300 10-second cures with a single charge.



Lightweight, ergonomic design

Multiple holding options reduce hand and arm stress.

PLS Technology

Demi Plus employs the power of Periodic Level Shifting, or PLS technology, shifting output intensity from 1100 mW/cm² to a peak of 1330 mW/cm² multiple times throughout the curing cycle with a wavelength of 450 nm to 470 nm. PLS drives cool, continuous high output for a true 5-second cure without generating excess heat.

Demi™ Plus REF/Part No. 910860-2

Demi Plus Handpiece, 8 mm Turbo Extended Light Guide, 1 Lithium-ion battery, Battery charger, Power supply, Protective Light, shield, Barrier sample pack

Demi™ Plus – Accessories REF/Part No.

Demi Plus – Battery (1 Lithium-ion battery)	921918-1
Demi Plus – Handpiece (Only handpiece)	921920-1
Demi Plus – 8 mm Turbo Extended Light Guide	921746
Demi Plus – 8 mm Turbo Light Guide	952213
Demi Plus – 4 mm Curved Turbo Light Guide (1 mm x 4 mm)	921676
Demi Plus – 2 mm Curved Light Guide (1 mm x 2 mm)	921677
Demi Plus – Battery Charger	921919-1
Demi Plus – Power Supply	952269
Demi Plus – 250 Sleeves	DEMI-250

Accessories REF/Part No.

Dem. 4 mm Curved Turbo Light Guide (1 mm x 4 mm)	961676
Demi 2 mm Curved Light Guide (1 mm x 2 mm)	921677
Demi Curved turbo Light guide (8 mm x 77 mm)	21020
Demi Curved turbo Light guide 4 mm	21185



Demi™ Plus

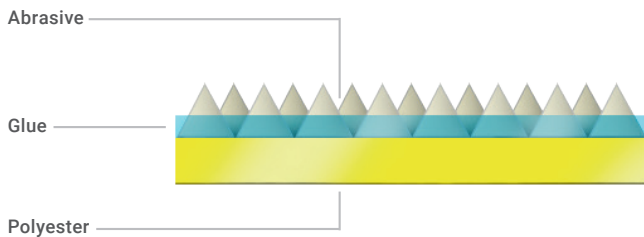
OptiDisc™

High-performing polishing and contouring disc

OptiDisc™ finishing and polishing discs allow you to obtain a final polish equal to that of natural dentition on all kinds of restorations. Made of durable polyester impregnated with aluminium oxide particles, the four-grit system achieves a long-lasting result.

A colour-coded system enables immediate identification of the grit type.

The flush-mounted mandrel ensures correct positioning of the disc and protects against scarring of the restoration. OptiDisc also features the choice of a short-size mandrel to facilitate access to posterior and other restricted areas.

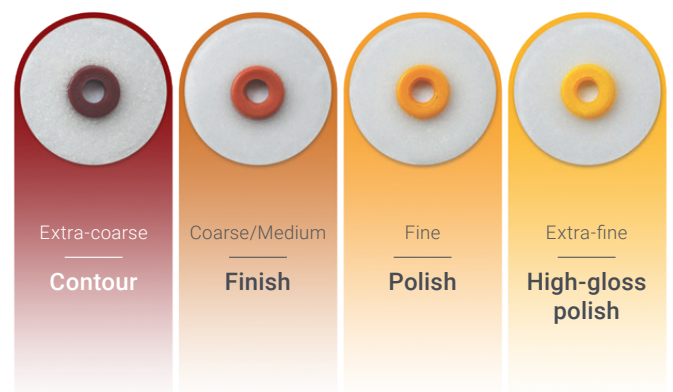


Ready to use and long-lasting performance


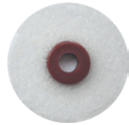






OptiDisc is made of polyester coated with aluminium oxide particles. Its abrasive layer has no extra adhesive coating, meaning the moment you fix the disc to the mandrel you are ready to go!

4 colours, 4 stages of abrasiveness

The OptiDisc system offers the choice of 4 grit level discs for contouring, finishing and high-gloss polishing. It is suitable for composite, glass ionomers, amalgams, semi-precious and precious metals. Discs are also available in three different diameter sizes depending on your needs: 9.6 mm, 12.6 mm and 15.9 mm.



A disc for all your finishing and polishing needs

Disc type	Indicated for	Anterior convex/flat area	Posterior convex/flat area	Inter-Proximal area
Extra-coarse	Gross reduction and contouring To adjust primary geometric form.			
Coarse /Medium	Finishing To remove composite excess, shape occlusal anatomy, lingual fissures and secondary anatomy.			
Fine	Polishing To erase surface scratches, and reduce surface roughness below Ra = 0.35 µm.			
Extra-fine	High-gloss polishing To reduce surface roughness to high-gloss below Ra = 0.2 µm.			

OptiDisc™ – General Assorted Kit REF/Part No. 4200

120 x ø 9.6 mm Assorted OptiDisc [30 x Extra-coarse, 30 x Coarse, 30 x Fine, 30 x Extra-fine],
120 x ø 12.6 mm Assorted OptiDisc [30 x Extra-coarse, 30 x Coarse, 30 x Fine, 30 x Extra-fine],
3 x Standard Mandrels, 2 x Short Mandrels, 1 x OptiShine

OptiDisc™ – Assorted Kit REF/Part No. 4190

ø 15.9 mm: 20 x Extra-coarse, 20 x Coarse, 20 x Fine, 20 x Extra-fine

OptiDisc™ – Mini Kit REF/Part No. 4188

ø 12.6 mm: 30 x Extra-coarse, 30 x Coarse, 30 x Fine, 30 x Extra-fine, 1 standard mandrel,
1 short mandrel, 1 OptiShine

OptiDisc™ – Refills REF/Part No.

80 x OptiDisc – 9.6 mm – Extra-coarse	4197
100 x OptiDisc – 9.6 mm – Coarse/Medium	4181
100 x OptiDisc – 9.6 mm – Fine	4182
100 x OptiDisc – 9.6 mm – Extra-fine	4183
80 x OptiDisc – 12.6 mm – Extra-coarse	4198
100 x OptiDisc – 12.6 mm – Coarse/Medium	4184
100 x OptiDisc – 12.6 mm – Fine	4185
100 x OptiDisc – 12.6 mm – Extra-fine	4186
80 x OptiDisc – 15.9 mm – Extra-coarse	4199
100 x OptiDisc – 15.9 mm – Coarse/Medium	4191
100 x OptiDisc – 15.9 mm – Fine	4192
100 x OptiDisc – 15.9 mm – Extra-fine	4193
5 x OptiDisc Standard Mandrel	195
5 x OptiDisc Short Mandrel	196



OptiDisc™ – Mini Kit

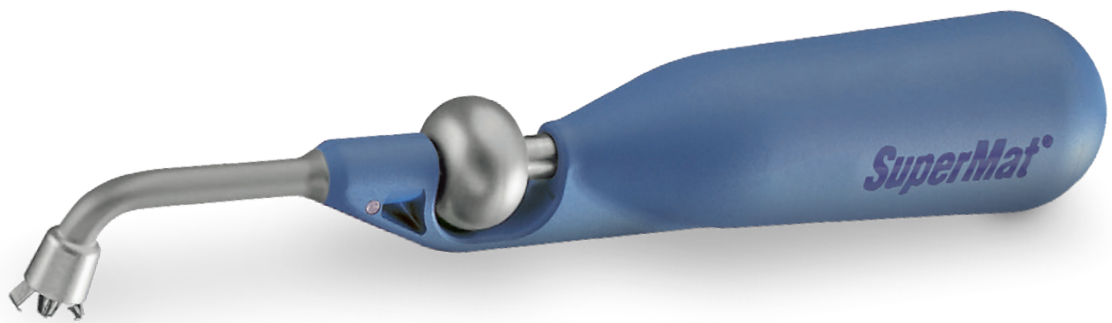


SuperMat™

Universal matrix tensioning system

The SuperMat™ universal tensioning system is ideal for both transparent or steel posterior matrices. Easy-to-use and time saving, it is comfortable for the patient, as no retainer is left in the mouth. SuperMat fits the matrices anatomically, reducing the finishing work required. Use with:

- The Adapt™ SuperCap™ Matrix – ready-to-use matrices with integrated spool to fix them to the SuperMat
- The SuperCap™ Spools – to fix one of the Kerr range of SuperMat-compatible matrices



Adapt SuperCap Matrices – Refills					REF/Part No.
	Dead-Soft Steel	0.030 mm	High 5.0 mm	Pack of 50	2161
	Dead-Soft Steel	0.030 mm	High 6.3 mm	Pack of 50	2162
	Non-Dead-Soft Steel	0.038 mm	High 5.0 mm	Pack of 50	2181
	Non-Dead-Soft Steel	0.038 mm	High 6.3 mm	Pack of 50	2182
	Transparent	0.050 mm	High 5.0 mm	Pack of 50	2171
	Transparent	0.050 mm	High 6.3 mm	Pack of 50	2172



SuperMat™ – Assorted Kit

SuperLock REF/Part No. 2160

1 x SuperLock tensioning instrument

SuperMat™ – Assorted Kit REF/Part No. 2150

1 x SuperLock tensioning instrument, 14 x Adapt SuperCap Steel Matrices assorted, 6 x Adapt SuperCap Transparent Matrices assorted

Adapt SuperCap Matrices – Refills	REF/Part No.
80 x OptiDisc – 9.6 mm – Extra-coarse	4197
100 x OptiDisc – 9.6 mm – Coarse/Medium	4181
100 x OptiDisc – 9.6 mm – Fine	4182
100 x OptiDisc – 9.6 mm – Extra-fine	4183

Sycamore Interdental Wedges

Interdental Wedges

Made of splint-free sycamore wood that ensures stability and compressibility. Wedges adapt to the tooth's anatomy: they match the interdental contour, are easy-to-insert, and prevent damage to the papillae.

Sycamore Interdental Wedges — Assortments

	REF/Part No.
Wedge System Assortment + 1 Wedge Positioner Instrument - Pack of 1,000	830
Sycamore Interdental Wedges - Assorted Set - Pack of 100	823
Sycamore Interdental Wedges - Assorted Set - Pack of 400	827
Sycamore Interdental Wedges - Wedges Dispenser - Assorted Set - Pack of 500	826
Wedge Positioner Instrument	820

Sycamore Interdental Wedges — Refills

			REF/Part No.
	Turquoise (Mini)	Pack of 1,000	829/05
		Pack of 100	822/05
	Orange	Pack of 1,000	829/10
		Pack of 100	822/10
	White	Pack of 1,000	829/20
		Pack of 100	822/20
	Green	Pack of 1,000	829/30
		Pack of 100	822/30
	Yellow	Pack of 1,000	829/40
		Pack of 100	822/40
	Blue	Pack of 1,000	829/50
		Pack of 100	822/50
	Red	Pack of 1,000	829/60
		Pack of 100	822/60
	White	Pack of 1,000	829/70
		Pack of 100	822/70



Sycamore Interdental Wedges



Kerr™

For more information
about Kerr Products, visit
www.kerrdental.com